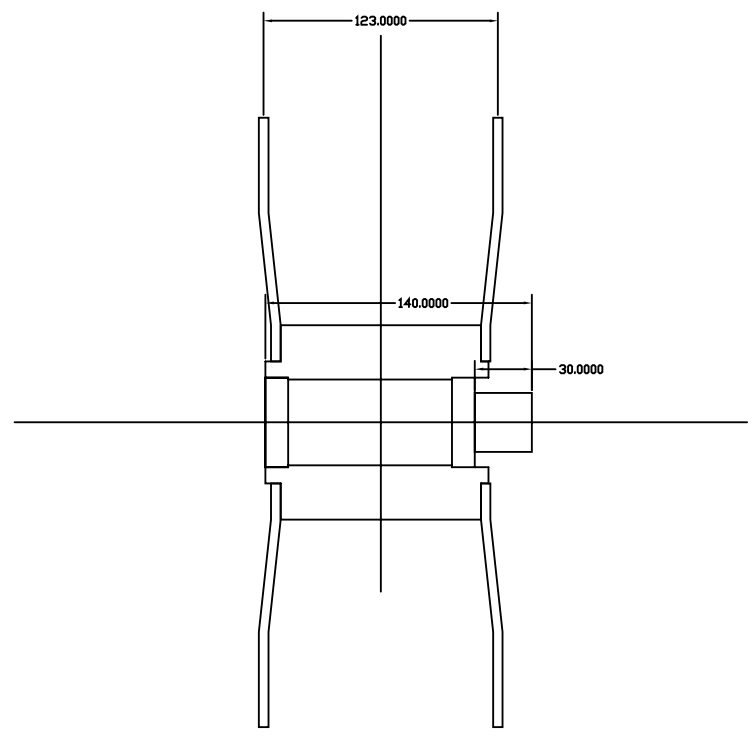
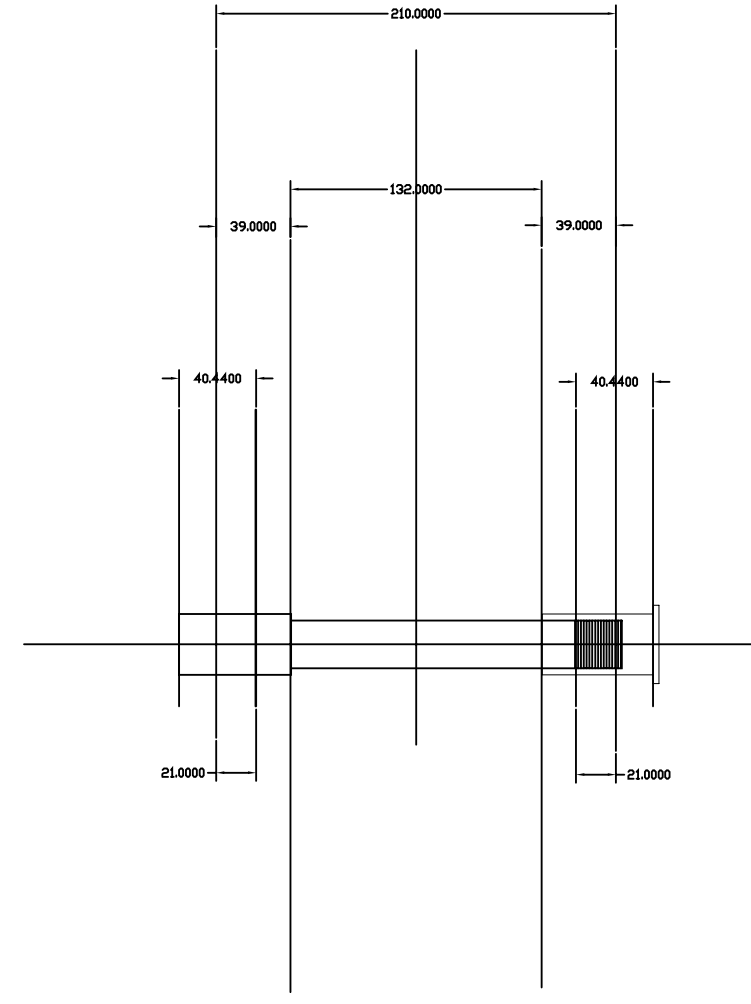


9 VILLAGE ROAD
BALTIMORE, MD. 21208
burnsdesign@comcast.net
443.463.1969

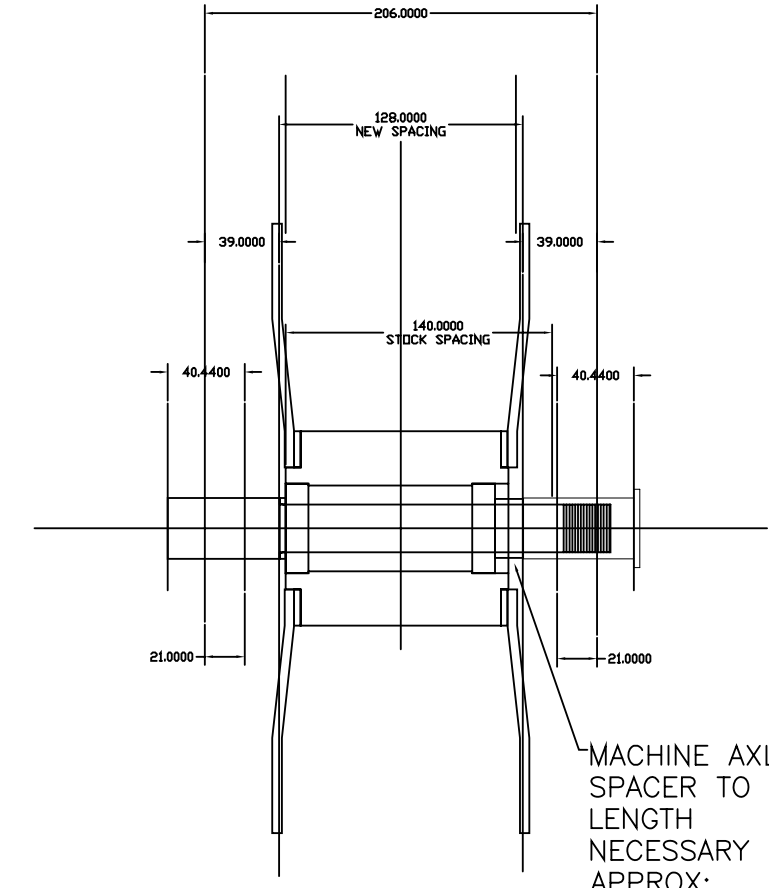
**DUCATI S2R
2003 GSX-R 1000
FORK SWAP
ROTOR UPGRADE**



STOCK DUCATI S2R 803
HUB W/SPACER 141MM
SPACER 31MM
ROTOR CENTER 123MM
CALIPER CENTER 131MM
FORK TO FORK INNER 163MM

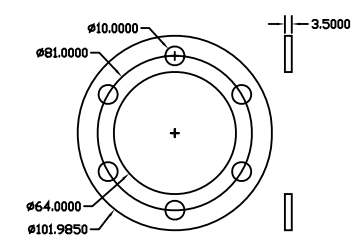


STOCK GSXR 1000

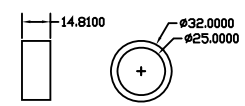


S2R / GSX-R HYBRID

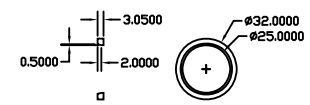
MACHINE AXLE
SPACER TO
LENGTH
NECESSARY
APPROX:
-11.63mm



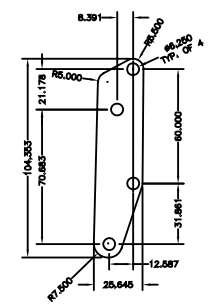
6061 AL ROTOR
SPACER
(2X REQUIRED)



STEEL AXLE SLEEVE SPACER
(1X REQUIRED)



STEEL AXLE SPACER
(1X REQUIRED)



FENDER BRACKET
(2X REQUIRED)

REV	DATE	DESCRIPTION

NOTES:
DRAWING MUST BE PLOTTED ON
11"X17" PAPER FOR SCALE
NOTED BELOW TO BE TRUE.

GROSS FLOOR AREA	-
STATUS	REFERENCE ONLY
DATE	04/05/07
DRAWN BY	R.BURNS
SCALE	NONE
DRAWING NUMBER	001
SHEET #	1 OF 1